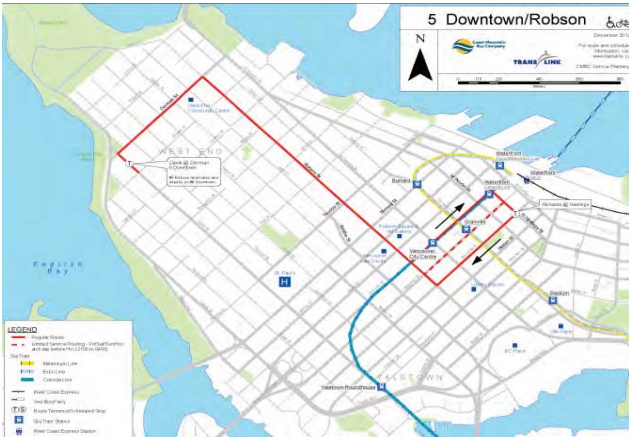


Route 005



Key Characteristics

- Subregion of Primary Service:** Vancouver/UBC
- Predominant Vehicle Type:** Std. Trolley
- Population (People, 400m Buffer):** 42,000
- Employment (Jobs, 400m Buffer):** 105,000
- Walkability (intersection density):** High (0.56 int./hect.)
- Contributes to FTN (Y/N):** Yes

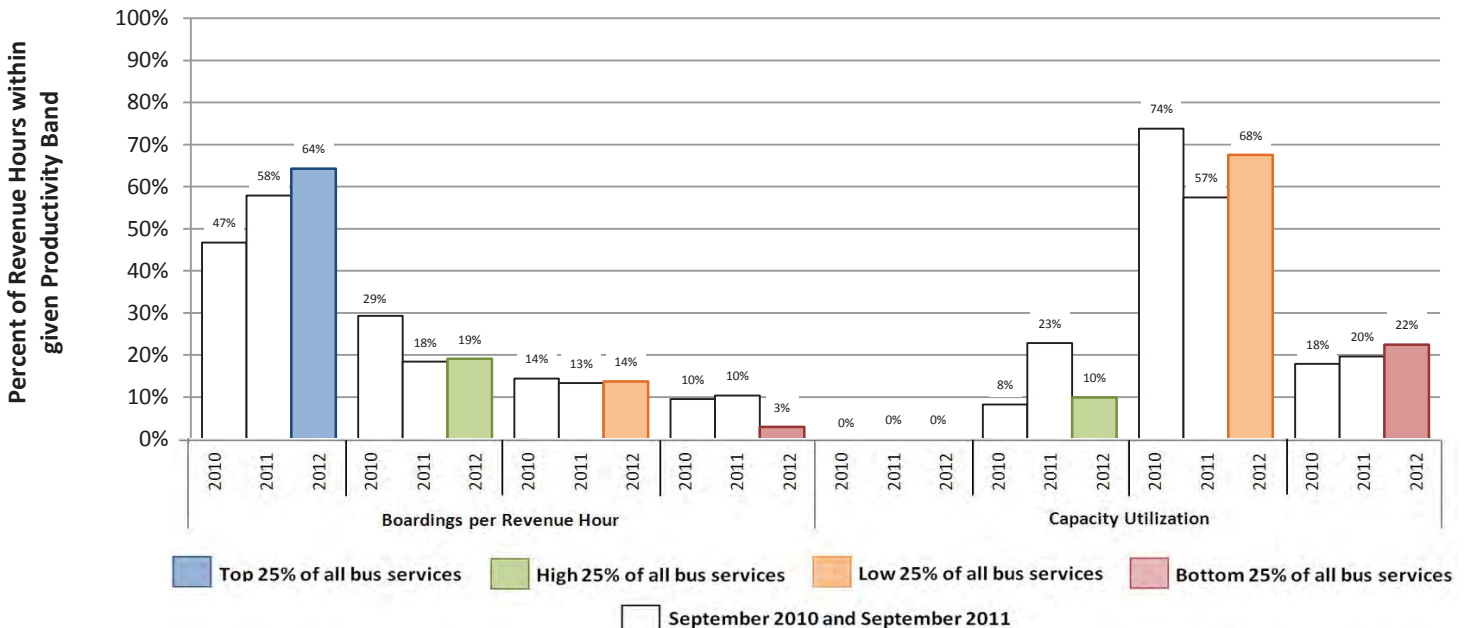
Cost & Performance

	2010	2011	2012	Rank (2012)
Annual Boardings:	3,094,000	3,167,000	3,353,000	21 of 213
Annual Service Cost:	\$3,317,000	\$3,193,000	\$3,184,000	38 of 218
Annual Revenue Hours:	33,200	31,900	31,800	38 of 218
Cost /Boarded Passenger:	\$1.07	\$1.01	\$0.95	9 of 212
Avg. Boardings / Rev. Hour:	93	99	105	8 of 212
Avg. Daily Boardings (Mon-Fri):	9,250	9,450	9,950	23 of 211
Avg. Daily Boardings (Saturdays):	7,700	8,100	8,350	18 of 179
Avg. Daily Boardings (Sun & Holidays):	5,900	6,100	6,650	18 of 171
Peak Passenger Load (Bi-directional Avg.):	22	26	25	70 of 211
Peak Load Factor (Vehicle Occupancy):			0.53	62 of 211
Average Capacity Utilization (Passenger Turnover):	63%	71%	67%	78 of 211

Service Changes Since 2010

- Winter 2010, Reduce freq on Saturday AM Peak
- Fall 2011, Return to service on Robson Square
- Winter 2012, #5 returns to operate on Robson St into Vancouver

Productivity



Current Performance by Day of Week, Route 005

Time	Annual Revenue Hours		Average Trips per Hour		Average Boardings per Hour		Average Boardings per Trip		Average Capacity Utilization		Average Peak Passenger Load (EB / WB)		Vehicle Type		
	2011	2012	2011	2012	2011	2012	2011	2012	2011	2012	2011	2012	2011	2012	
Mon-Fri	01:00 - 06:00	409	388	2	2	53	48	13	9	26%	22%	20 / 3	13 / 4	Std. Trolley	Std. Trolley
	06:00 - 09:00	3717	3684	9	9	88	88	29	29	64%	62%	37 / 13	33 / 17	Std. Trolley	Std. Trolley
	09:00 - 15:00	8745	8771	9	9	73	74	31	29	65%	62%	26 / 18	24 / 18	Std. Trolley	Std. Trolley
	15:00 - 18:00	5737	5671	11	11	96	93	42	39	90%	82%	28 / 34	25 / 35	Std. Trolley	Std. Trolley
	18:00 - 21:00	3325	3321	7	7	102	98	37	35	79%	75%	28 / 30	27 / 30	Std. Trolley	Std. Trolley
	21:00 - 01:00	1892	1925	5	4	69	76	23	23	49%	50%	19 / 19	20 / 19	Std. Trolley	Std. Trolley

Time	Annual Revenue Hours		Average Trips per Hour		Average Boardings per Hour		Average Boardings per Trip		Average Capacity Utilization		Average Peak Passenger Load (EB / WB)		Vehicle Type		
	2011	2012	2011	2012	2011	2012	2011	2012	2011	2012	2011	2012	2011	2012	
Saturday	01:00 - 06:00	59	59	1	1	36	24	8	5	19%	12%	8 / 6	5 / 5	Std. Trolley	Std. Trolley
	06:00 - 09:00	316	316	4	4	55	56	17	16	36%	36%	19 / 9	19 / 10	Std. Trolley	Std. Trolley & Std. Bus
	09:00 - 15:00	1826	1818	10	9	67	67	27	26	59%	55%	25 / 15	21 / 17	Std. Trolley	Std. Trolley & Std. Bus
	15:00 - 18:00	980	980	9	9	90	97	42	41	91%	86%	35 / 30	34 / 28	Std. Trolley	Std. Trolley & Std. Bus
	18:00 - 21:00	588	590	6	6	115	110	48	42	103%	89%	37 / 39	36 / 32	Std. Trolley	Std. Trolley & Std. Bus
	21:00 - 01:00	427	427	4	4	78	99	28	33	62%	71%	25 / 22	33 / 25	Std. Trolley	Std. Trolley & Std. Bus

Time	Annual Revenue Hours		Average Trips per Hour		Average Boardings per Hour		Average Boardings per Trip		Average Capacity Utilization		Average Peak Passenger Load (EB / WB)		Vehicle Type		
	2011	2012	2011	2012	2011	2012	2011	2012	2011	2012	2011	2012	2011	2012	
Sunday/Holiday	01:00 - 06:00	33	33	1	1	20	49	6	6	12%	14%	/ 5	8 / 4	Std. Trolley	Std. Trolley & Std. Bus
	06:00 - 09:00	216	216	3	3	57	64	14	14	30%	29%	15 / 8	13 / 9	Std. Trolley	Std. Trolley
	09:00 - 15:00	1626	1612	8	8	86	85	31	29	68%	63%	30 / 19	26 / 18	Std. Trolley	Std. Trolley
	15:00 - 18:00	916	915	7	7	110	114	45	44	96%	93%	37 / 33	32 / 35	Std. Trolley	Std. Trolley & Std. Bus
	18:00 - 21:00	639	639	6	6	101	101	37	36	81%	79%	31 / 29	29 / 29	Std. Trolley	Std. Trolley & Std. Bus
	21:00 - 01:00	476	478	4	4	61	54	20	18	43%	38%	19 / 16	16 / 14	Std. Trolley	Std. Trolley & Std. Bus

Top 25% of all bus services
 High 25% of all bus services
 Low 25% of all bus services
 Bottom 25% of all bus services
 # Above Guidelines